

# Battery Wand Installation

## CAUTION:

- Use 9V Battery Wands with 9V LT-30 motors only
- Use 12V Battery Wands with 12V LT-30 motors only

There are 4 types of battery wands:



There are 3 types of battery clips:

Wall Mount\*



Silhouette/Arabesque



Shangri-La/Vienna



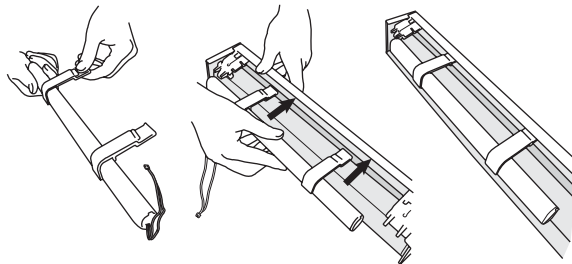
\*Each battery wand comes with the wall mount clip pack. The Silhouette/Arabesque and Shangri-La/Vienna clip packs may be ordered separately at no charge.

Dual battery wands come with a Battery-to-Motor Cable



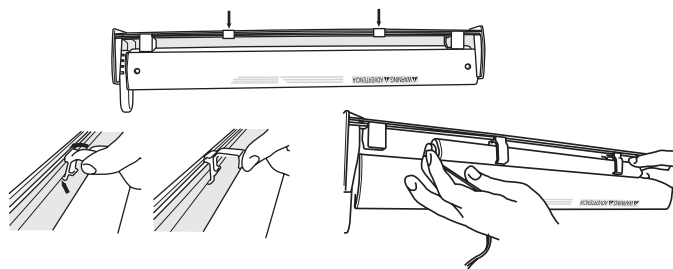
## Silhouette/Arabesque Application:

- Attach the battery wand to the mounting clips, approximately 8 inches apart.
- Attach the clips to the shading as pictured.
- Connect wand to motor. Insert cable correctly.



## Shangri-La/Vienna Application:

- Attach the clips to the headrail as pictured.
- Attach battery wand
- Connect wand to motor. Insert cable correctly.

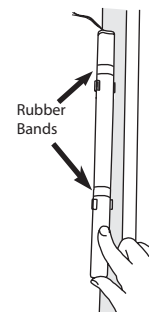


## Wall-Mount Application:

- Attach the clips to the surface using included screws.
- Attach battery wand.
- Connect wand to motor. Insert cable correctly.

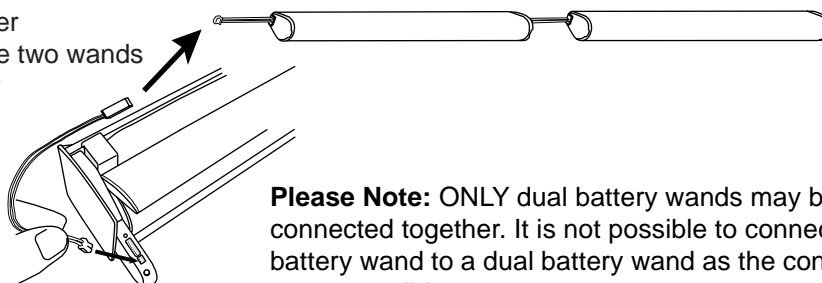


For vertical installation, put rubber bands over wand, then snap into wall mount clips.



## Dual Battery Wands:

- Connect the two battery wands together
- Attach the battery-to-motor cable to the two wands
- Plug battery-to-motor cable into motor



**Please Note:** ONLY dual battery wands may be connected together. It is not possible to connect a single battery wand to a dual battery wand as the connectors are not compatible